

Electronic supplementary information

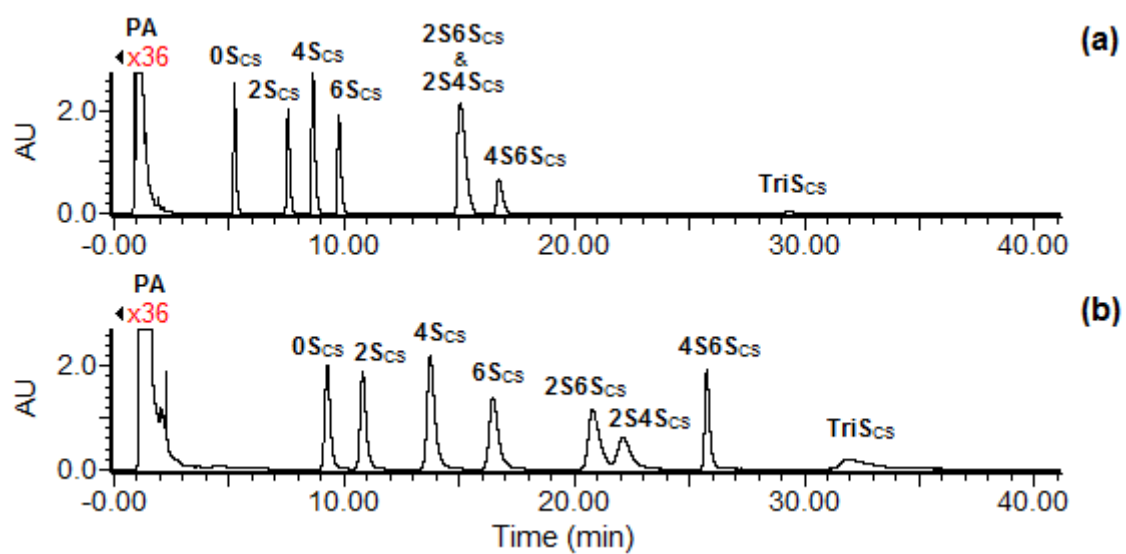


Figure S-1: Effect of ammonium formate (pH 4.4) concentration on procainamide (PA)-labelled CS disaccharide separation using GlycanPac AXH-1 (a) 50 mM (b) 150 mM

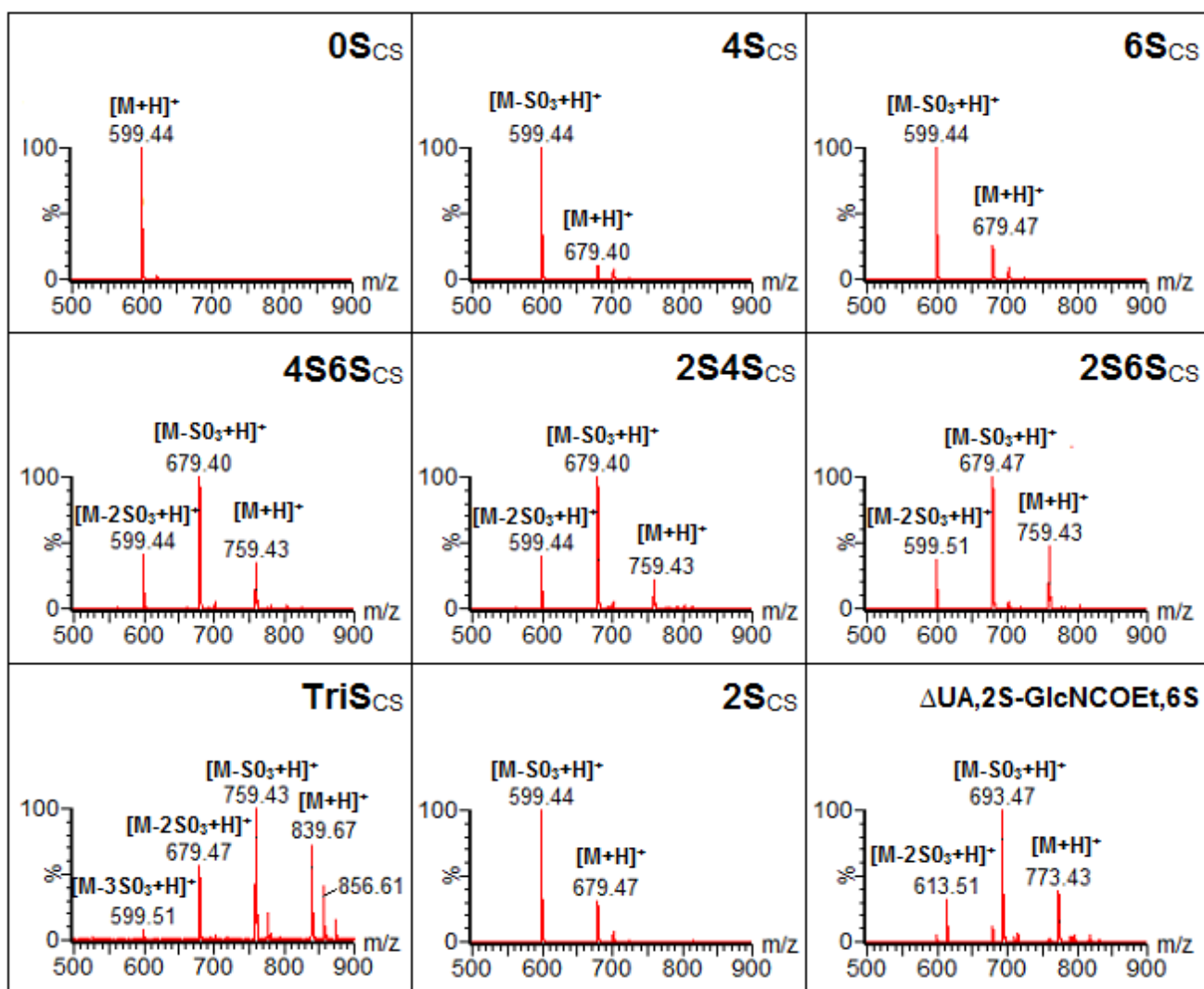


Figure S-2: Mass spectra of procainamide-labelled CS disaccharides and internal standard (Δ UA,2S – GlcNCOEt-6S)

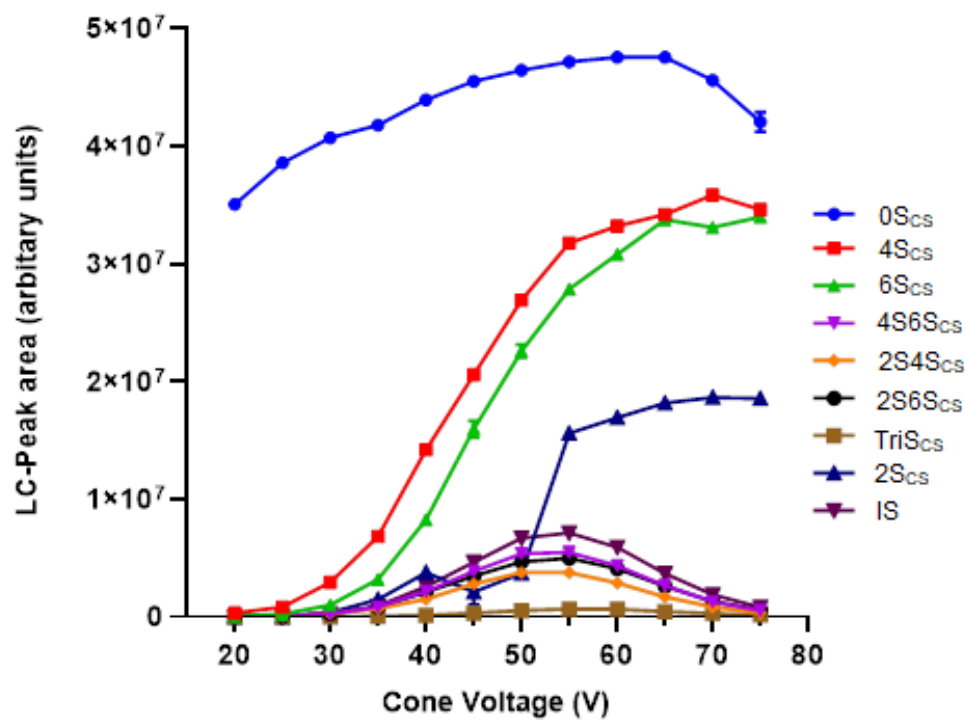


Figure S-3: LC-Peak area of procainamide-derivatised CS disaccharides and disaccharide internal disaccharide standard (20 $\mu\text{g/mL}$ each) as a function of MS cone voltage.

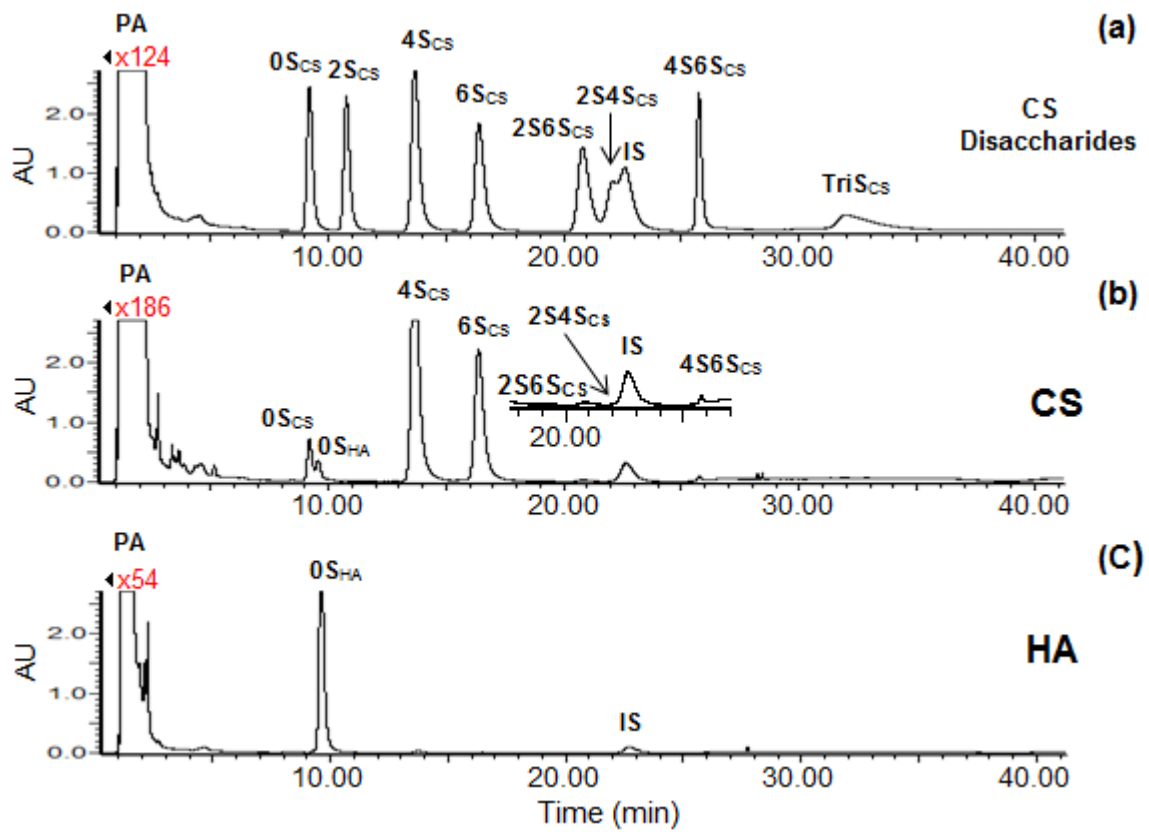


Figure S-4: Chromatogram of procainamide (PA)-labelled (a) CS disaccharides and internal standard (b) disaccharide composition of bovine cartilage CS and (c) rooster comb HA upon chondroitinase ABC digestion.