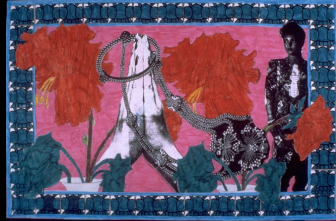


Loraine Leeson

Re-thinking (E)valuation



West Meets East 1992



Awakenings 1995-6
after *Resurrection* by Stanley Spencer
Tate Gallery commission

History of VOLCO
 Guide to VOLCO
 About the menu
 Using Help
 Teachers' pages
 Registration
 Privacy policy
 Copyright
 Contact us

VOLCO is a virtual
 OpenWorld
 environment and
 has many more
 features and
 options than
 any other
 virtual world
 environment
 available
 today. It is
 a free
 environment
 and has
 no
 subscription
 fee.

Settlements
 Latest flies at top

- Volcano
- Mountain of Prosperity
- Haven City
- Eden Plant Land
- Eden
- Eden
- Eden Valley
- Eden Valley

Elders

- Eden Village Training Centre
- Eden Training Base

archive

Search the Archive

Search the Archive

Arts
 Babelfish
 Creatures
 Family Life
 Food
 Cloud
 Love
 Learning
 Living
 Medicine
 Media
 Pets
 Plants
 Shopping
 Sports
 Traditions
 Travel
 Water
 Weather
 Work

living

Dome Home

Dome Homes are where the Forest Gate Volcano live. Homes vary in colour, surface & size. From top to bottom these "Dome Homes" are a unique design. Long poles give superb internet access; handy when you live on a virtual planet!

Created: The Archivist
 Created: 20 December 2002
 Visit: create's page
 Change the Atlas

map

Millennium Mob

Zap

My ears hear the truth
 My eyes see what people think

I live on top of the sun. There's just me and my twin Zip. I wear black flares and starry shirt. I can see the whole world on my shirt. I have an invisible hat. My trousers turn into anything. I am 10 years old in your world, 100 in mine.

[Change Page](#) [Visit Settlement](#)

TOUCH DOWN ON VOLCO



enters Volcan atmosphere ... grey cloud drink inc

VOLCO 1999 to 2009
www.volco.org


The Young Person's guide to the Royal Docks

home sites the Project

Royal Victoria Dock Footbridge

Gallery

View the photo gallery



Sound

To hear the clip you need QuickTime's Flash plugin.

Info

A walkway links the C4 House station with the old dock. Exhibits are situated close to the C4 House Hotel. There is a dockside access. Come station, walk to C4C4, the bridge across the dock.

Links

Journey Planner
DLR station and map
Street Map

Use this bridge if you need to cross the dock between ExCel and Silvertown. It's a new bridge with great views of the Docklands, Millennium Dome and London City Airport.



home sites the Project

Custom House

Gallery

View the photo gallery



Sound

To hear the clip you need QuickTime's Flash plugin.

Info


This is an area with a rich history of working class dock-workers and families used to live. There are sometimes are nice and look very similar, people are nice.

Links

Journey Planner
DLR station and map

Its variety of different take-aways will make you feel you're in China or India - and where to find a local doctor.

At Shipman Youth Centre they do lots of fun stuff



Young Person's Guide to the Royal Docks a cSPACE project

www.ypg2rd.org

DLR Station: Prince Regent

Get there by Docklands Light Railway. Nearest station: Prince Regent.

Docklands Light Railway




home sites the Project

Thames Barrier

Gallery

View the photo gallery



Sound

To hear the clip you need QuickTime's Flash plugin.

Info

The Thames Barrier is a movable gate that stretches across the river to protect London from flooding.

Links

Journey Planner
DLR station and map
Background

The Thames Barrier is really worth seeing!




home sites the Project

The Beach

Gallery

View the photo gallery



Sound

To hear the clip you need QuickTime's Flash plugin.

Info

Not far from The Royal Victoria Station and next to the dock, is a waterfront cafe. Near this there is an area which locals call 'The Beach'.

Links

Journey Planner
DLR station and map

A place to relax, lay down and watch the beautiful water and swans swimming...



The Young Person's Guide to the Royal Docks
2005-7

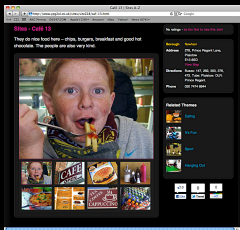
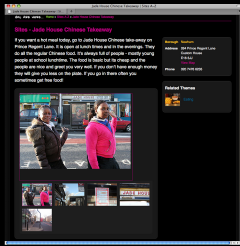
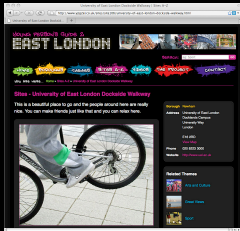
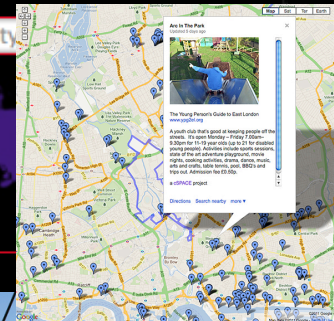
YOUNG PERSON'S GUIDE 2 EAST LONDON



SEARCH:

HOME BOROUGHS THEMES SITES A-Z VIDEOS THE PROJECT

YOU ARE HERE... Home » The Project



THE YOUNG PERSON'S GUIDE TO EAST LONDON

East London places they don't put in travel guides!



Café Verde @ Riverside > The Mosaic, 45 Narrow Street, Limehouse, London E14 8DN > Fresh food, authentic Italian menu, nice surroundings – a good place to hang out, sit with an ice cream and watch the fountain. For the full review and travel information go to [page 5](#).

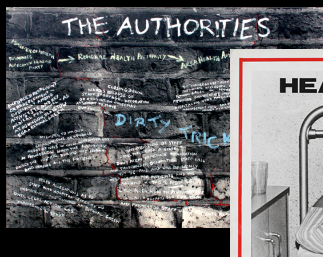
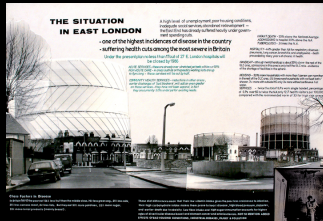
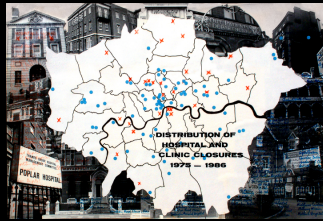
Discover great places to visit in East London reviewed by the teenagers who live there. In this guide you'll find reviews, travel information and photos of over 200 places to visit, all within the five London 2012 Olympic boroughs.

WWW.YPG2EL.



The Young Person's Guide to East London
2007-12

www.ypg2el.org



Mass support is crucial if the campaign is to succeed

The support of established organisations and activists is necessary but it is ultimately organised mass support which can wield most power

26th of November ('77) - the first large public meeting at York Hall attended by nearly 700 people. Speakers from the campaign committee were augmented by representatives from numerous organisations, local and national, and a great portion of the meeting was devoted to speakers from the floor.

28th of January - a street demonstration marched from Bethnal Green to the London Hospital, Whitechapel - location of the District Management Team. This was followed by a lobby of the Area Health Authority in Marsh's second march was cancelled due to the Metropolitan Police ban. Meanwhile impetus has been maintained by: small meetings, leafleting, badges, car stickers, posters, a film, performance - etc, social events

PUBLIC SUPPORT

The support of the local press is very important as it is extending information to the national press and media. The authorities are less able under the scrutiny of national media - it may not deter them but it does exert additional pressure

It is important that evidence of the campaign is visible at the hospital to visitors & passers by.

BETHNAL GREEN AND STEPNEY TRADES COUNCIL

NO HOSPITAL CLOSURES. STOP THE CUTS.

HANDS OFF BETHNAL GREEN HOSPITAL

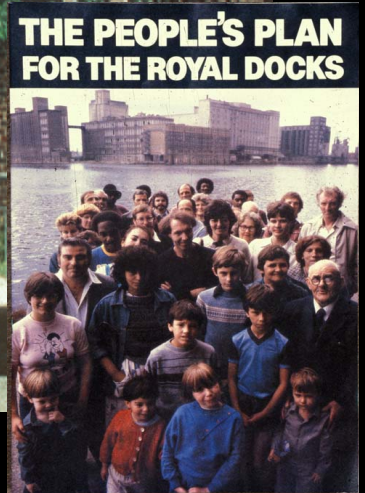
HACKNEY AND STEPNEY COUNCIL

EUROPE

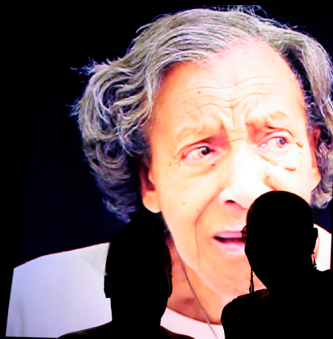
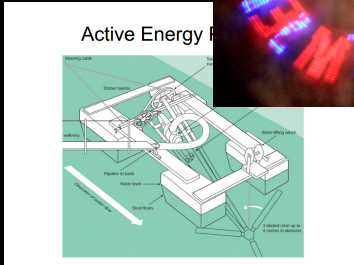
TO MAN THE WORLD OER SHALL BROTHERS BE FOR A TRY

EAST LONDON SOCIALIST WORKERS PARTY

Campaign to Save Bethnal Green Hospital 1978-79



Docklands Community Poster Project 1981-91



GEEZER POWER

Seniors unveil renewable energy plan

COPNEY SENIORS, who say they have a thing or two about the world and its problems, are the power behind a new renewable energy plan.

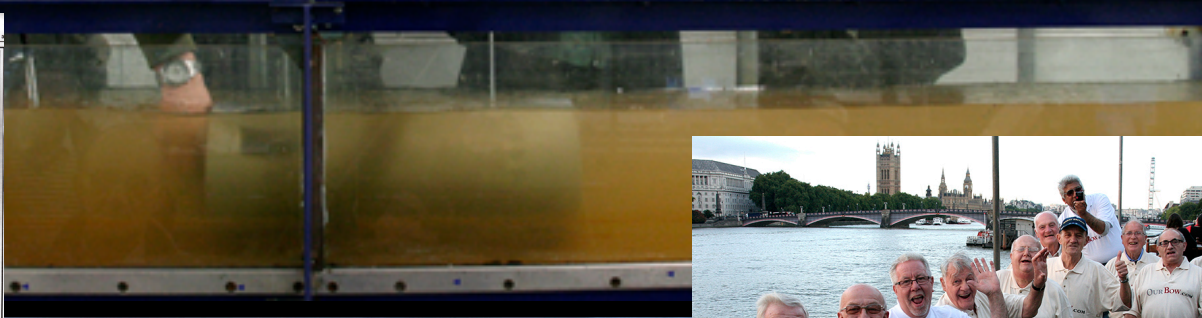
The plan, which is being unveiled at the Copney Seniors Centre in East London, is a joint venture between the Copney Seniors and the Copney Seniors Energy Trust. The plan is to build a renewable energy plant in the area, which will generate electricity from wind and solar power. The plant is expected to be completed in 2015 and will generate enough electricity to power the centre and surrounding area.

John Sen, 74

Charles Smith, 76

GEEZER'S CLUB

PHOTO: ILLUSTRATION BY NADY COLE AND A. SPACE STUDIOS



Active Energy
from 2008
www.active-energy-london.org

