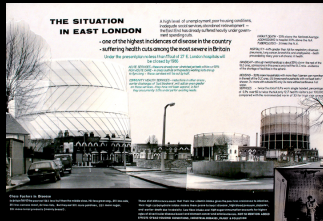
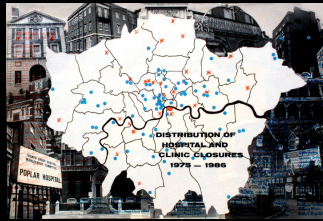


Lorraine Leeson

... some lessons learned on the art and politics of social engagement
1978 – 2013



Mass support is crucial if the campaign is to succeed

The support of established organisations and activists is necessary but it is ultimately organised mass support which can wield most power

26th of November ('77) - the first large public meeting at York Hall attended by nearly 700 people. Speakers from the campaign committee were augmented by representatives from numerous organisations, local and national, and a great portion of the meeting was devoted to speakers from the floor.

28th of January - a street demonstration marched from Bethnal Green to the London Hospital, Whitechapel - location of the District Management Team. This was followed by a lobby of the Area Health Authority in Marsh's second march was cancelled due to the Metropolitan Police ban. Meanwhile impetus has been maintained by: small meetings, leafleting, badges, car stickers, posters, a film, performances, social events.

PUBLIC SUPPORT

The support of the local press is very important as it is extending information to the national press and media. The authorities are less able under the scrutiny of national media - it may not deter them but it does exert additional pressure.

It is important that evidence of the campaign to the hospital to visitors & passers by is visible at

NO HOSPITAL CLOSURES. STOP THE CUTS.

HANDS OFF BETHNAL GREEN HOSPITAL

BETHNAL GREEN AND STENEY TRADES COUNCIL

HACKNEY AND STENEY COUNCIL

EUROPE

TO MAN THE WORLD OER SHALL BROTHERS BE FOR A TRY

SOVIET WORKERS

Campaign to Save Bethnal Green Hospital 1978



PASSING THE BUCK

games for multinational drug companies

MENTAL ILLNESS IS CLASS CONSCIOUS!

It can strike anyone - but it is more likely to strike someone from a deprived area



1 woman in 6, 1 man in 9 ... have treatment in a psychiatric hospital at some time in their lives - most from alcohol or drug dependence ... Mental illness (especially) has been explained as high as 40% for working class mothers with young children ... The incidence of schizophrenia has been calculated with 97% accuracy according to the degree of poverty which prevails (I.P.S. Poverty and Schizophrenia 1973).

EAST LONDON
 13% above national average mental hospital admissions
 3 times the number of men diagnosed schizophrenic, 3x as many homeless and without employment.
 BUT FACILITIES ARE FEW

In Hackney the situation is worse - patients still requiring hospital treatment are discharged some extreme symptoms seem to make room for new urgent cases. The hospital at Queen for long term mental patients from the East had been closed -
EAST LONDON NOW HAS NO PROVISION FOR LONG TERM CHRONIC PATIENTS -
 How is there provision for violent patients. They are currently dealt with by the police and are not receiving the psychiatric help they need. Government funds allocated for this purpose are being held back. -

WE MUST DEMAND THAT THESE FUNDS ARE RELEASED IMMEDIATELY
 The Department of Health aims to reduce hospital places for the mentally ill from 2.25 per 1000 of the population to 2.0, with the promise of an increase in new suitable community residences. However a MIND survey shows that this move would require 34,800 such residences. There are at present only 5,000.

IT IS IMPORTANT TO FIGHT FOR THE RESOURCES ESSENTIAL TO A PATIENT'S SUSTAINABLE RECOVERY BUT THE NEED FOR AN IMPROVEMENT IN LIVING AND WORKING CONDITIONS MUST NOT BE FORGOTTEN - AN ENVIRONMENT SUPPORTIVE OF PHYSICAL AND PSYCHOLOGICAL HEALTH SHOULD BE A RIGHT, NOT A PRIVILEGE



BEHIND THE NHS

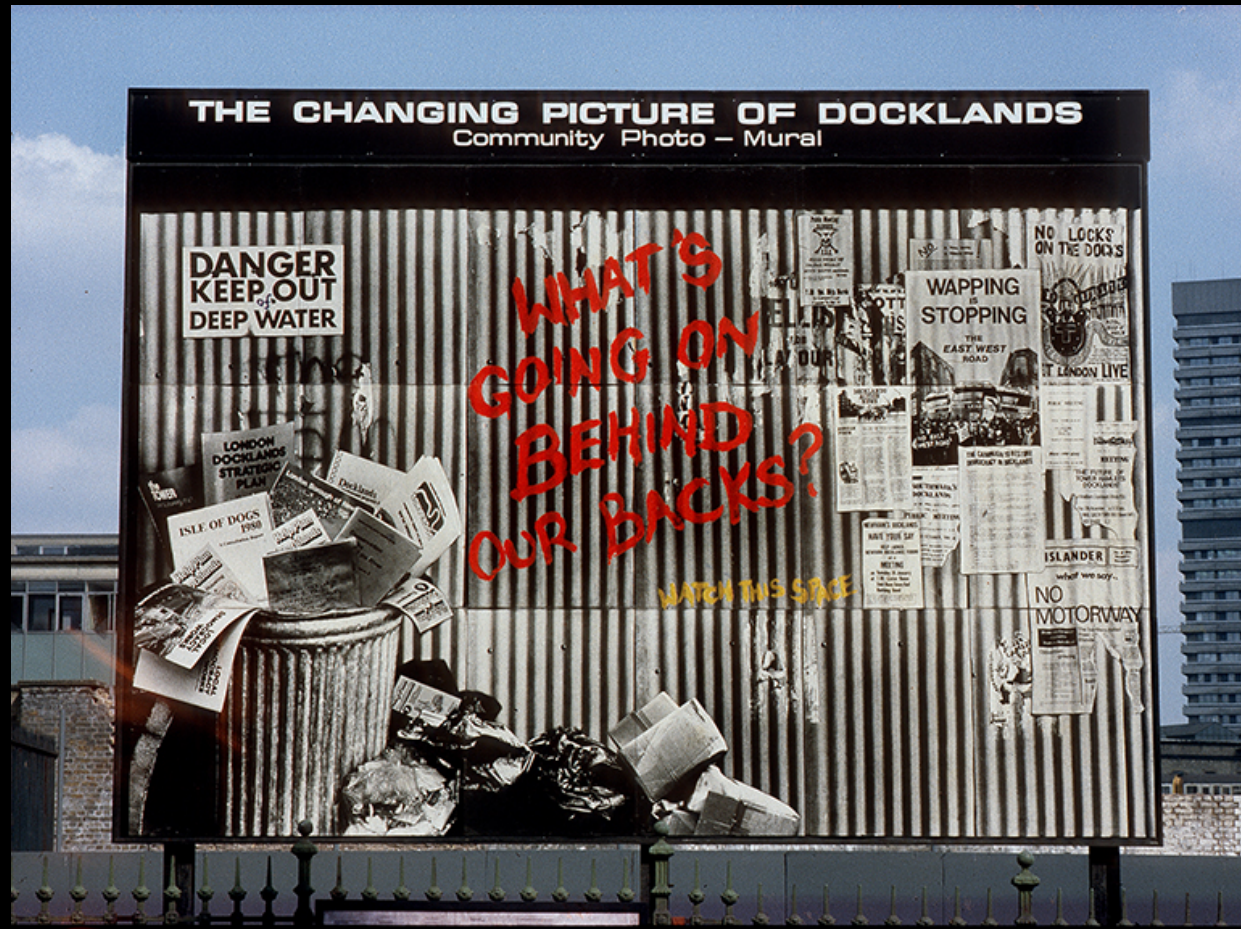
A history of struggle

- 1830 First national trade union - National Association for the Protection of Labour
- 1833 First Factory Act limiting working hours of children
- 1867 Ten Hour Act
- 1884 First Public Health Act
- 1900 Housing of Working Classes Act
- 1907 Workmen's Compensation Act
- 1908 Education (provision of meals) Act
- 1911 National Insurance
- 1918 Education (Medical Inspections) Act
- 1919 Ministry of Health
- 1926 Milk in schools
- 1948 National Health Service founded

BEFORE AS A NEW STRUGGLE - FIGHT THE CUTS

Side-effects
 Occasional side-effects may include nausea, vomiting, changes in body weight or interest in sex, possible deterioration in conditions mentioned in paragraph 2 of Precipitated or long-term effects may occur during long periods of treatment. It is not easy to decide when the side-effects are the result of your taking the pills or that true side-effects left by the use of a long-term oral contraceptive. Most side-effects are of a minor nature and are reversible about any change in your regimen that you notice while following instructions.
 Storage your pills
 Store your pills in a cool, dry place, out of the reach of children.
 Composition
 Each tablet of Ovral contains 50 mcg ethinodiol diacetate and 30 mcg ethinodiol.
 Each tablet of Ovral contains 50 mcg ethinodiol diacetate and 30 mcg ethinodiol.
 Beware of Man Made Medicine
 Beware of Man Made Medicine
 Beware of Man Made Medicine
 Beware of Man Made Medicine
 Beware of Man Made Medicine

East London Health Project 1978

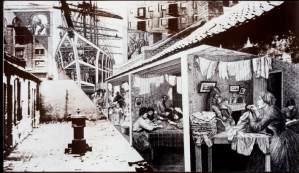


Docklands Community Poster Project 1981-91





The people of Docklands have always had to fight to make the best of appalling conditions – and to change them.



The people of Docklands have always had to fight to make the best of appalling conditions – and to change them.



The people of Docklands have always had to fight to make the best of appalling conditions – and to change them.



The people of Docklands have always had to fight to make the best of appalling conditions – and to change them.



The people of Docklands have always had to fight to make the best of appalling conditions – and to change them.

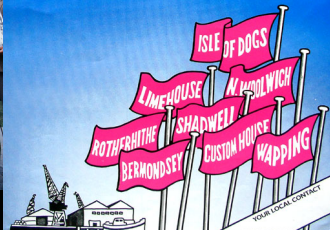
Docklands Community Poster Project

- history of housing photo-mural sequence

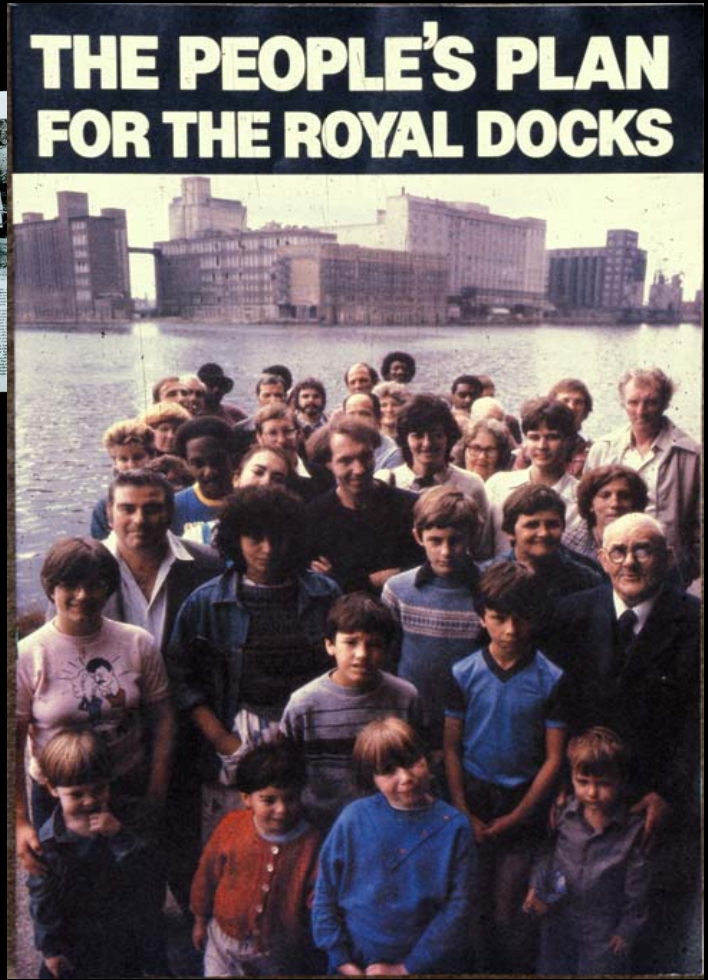


Hands off
our
Docklands

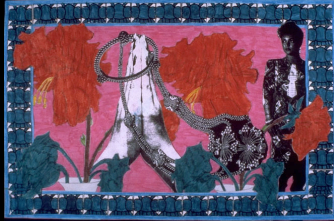
join the people's armada
to parliament
tues 17 April



Docklands Community Poster Project
Peoples Armadas to Parliament 1984-86



Docklands Community Poster Project
Peoples Plan for the Royal Docks 1983



West Meets East 1992



Awakenings 1995-6
after *Resurrection* by Stanley Spencer

We were Children of Mary at school a female organisation for women. You had to do an amount of prayer and put in extra hours in contact with God and the Virgin Mary. There was a big statue of the Virgin Mary at the end of the study which would have a white veil on it and the older we got, the more we moved down the study on the assumption that we would behave ourselves and I used to polish my shoes in the veil as an act of revolt!

I think that Celtic people are naturally effervescent with a positive attitude to life. Irish people were like that before the famine of the 1840's. After the famine the heavy hand of Catholicism crept into Ireland. If a naturally indigenous culture had been allowed to develop, a much more natural



evolution of a culture into the 20th Century would have occurred.

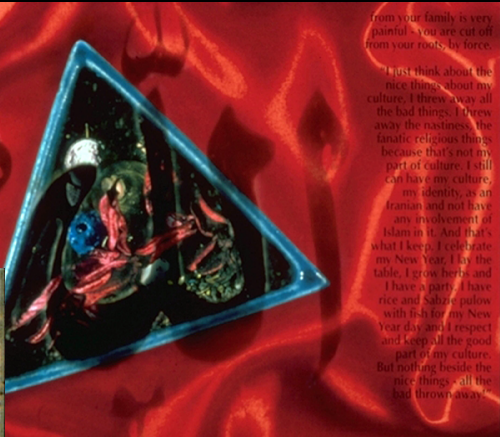
Some of the times women will ask you to have a mass said for the dearly departed. The worst experience I had was the first, she said "Would you have a mass said for my dead foetus?" And I said "alright, but I'll have to find out where the local Church is and find a Priest." She was horrified because she didn't realise that people like me are so distant from religion. The whole point about religion whether it's orthodox or fundamentalist is that it's about rules and it's not about choice. You can't choose which rules you keep and don't keep and when to keep them. It's the opposite of autonomy - it's not having the freedom to choose and

If you are a girl you can't travel and you want to go somewhere, still you have to get permission from your brother or father because as a woman you're not really a proper person. And you feel "well I am intelligent, I can do this and that then why should I be less than my brother?"

My sister was in prison in Iran because she was a political prisoner and I didn't know really.

quite a long time before I got upset about not being able to buy Chanukah candles anywhere. But there were always tunes going round in my head that I'd been brought up with that I wasn't hearing anymore and I wasn't going to hear them anywhere because they were quite particular to my own Sephardi background.

I remembered one time really well and then a few years ago I realised that I could actually work it out and play it which I'd never done before. So I did - then I realised that I could do more than that. I could transcribe it and then we could all play it in the band and perform it and that was wonderful because it was like something back to life which I'd thought I'd lost for good.



from your family is very painful - you are cut off from your roots - by force.

"I just think about the nice things about my culture. I threw away all the bad things. I threw away the racism, the fanatic religious things because that's not my part of culture. I still can have my culture, my identity, as an Iranian and not have any involvement of Islam in it. And that's what I keep. I celebrate my New Year, Lay the table, I grow herbs and I have a party. I have rice and Sabzi plov with fish for my New Year day and I respect and keep all the good part of my culture. But nothing beside the nice things - all the bad thrown away."

My husband got angry when women got monthly periods. There is a Hindu God, Hanuman who came into his mind and he lost his temper only on women. I believed that my husband's God was totally different from Hanuman. And I told my husband "I don't believe it. Hanuman never got married because he respected women as a daughter, sister and mother." He frightened me that if when I have my period I go and cook anything, his mother is going to get very angry. So there were four or five days when I was shaking.

Indian girls are taught by their families that you must respect your husband because he is God and you must fulfil his wishes and please him that is your duty. Women have to do all the sacrifices. On my



side, I thought "I'd divorce him, if I run away, nobody is going to like it. I'd have to go back to my family and be a burden again. Nobody is going to get married with me, especially Indian men like young girls - virgins. If somebody married me then my family would have to spend lots of money on the dowry system and the wedding again. So I really never wanted to put pressure and burdens on my family."

In prison, I got more freedom than I used to have before. I spent three years and four months in prison and I got more love and affection from officers, nurses and all the inmates. I could talk with anyone. I could make friends. I could go to any body's room - this was freedom!

I was very artistic from the day I understood myself. My family didn't know how to cope with that and were suffering. They decided to get rid of me at the age of seventeen and a half when I came here. I say "get rid of me" but they found my husband here for me and I came to marry him.

I had to wear what they wanted me to wear, I had to cook what they wanted me to cook, I had to eat what they wanted me to eat, I had to talk to people the way they wanted me to talk. I always had to be somebody else - I could never be myself.

When I came here I used to write my poetry, just as a hobby, and used to sing while I am working or outside. I had to put a complete stop on all that. My mum said to me



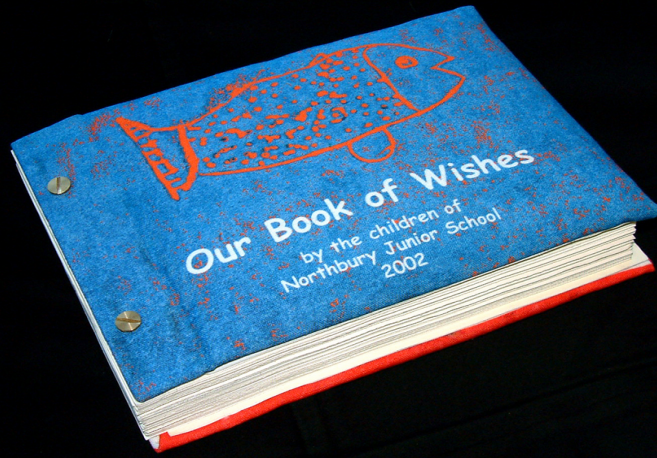
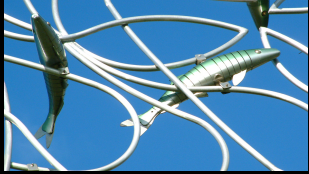
Because your husband is like a God."

He would want me to sing in front of people and say "Come on, come on sing!" When I'd just come home from the hospital with my child, he'd wake me up at two o'clock and say "You will have to sing, you will have to!" And then he would use that against me.

She didn't want me to divorce him, because she was scared of what society, people would say. I said, "I won't say I made a mistake, because I did not. You chose a bad, stupid man for me."



Between Family Lines 1994



The Catch 2002

History of VOLCO
 Guide to VOLCO
 About the menu
 Using Help
 Teachers' pages
 Registration
 Privacy policy
 Copyright
 Contact us

VOLCO is a virtual
 OpenWorld
 environment and
 has a rich history
 Children and young
 people can take
 part in the creation
 of a virtual world
 where they can
 interact with
 other people and
 explore the
 possibilities of the
 virtual world.

Settlements
 Latest flies at top

- Volcano
- Mountain of Prosperity
- Haven City
- Eden Plant Land
- Eden
- Eden
- Eden Valley
- Eden Valley

Elders

- Eden Village Training Centre
- Eden Training Base

archive

Search the Archive

Search the Archive

View the Archive

Arts, Babelfish, Creatures, Family Life, Food, Cloud, Love, Learning, Living, Medicine, Music, News, Objects, Shopping, Sports, Traditions, Travel, Water, Weather, Work

living

Dome Home

Dome Homes are where the Forest Gate Volcano live. Homes vary in colour, surface & size. From top to bottom these "Dome Homes" are a unique design. Long poles give superb internet access; handy when you live on a virtual planet!

Created: The Archivist
 Created: 20 December 2002
 Visit: create's page
 Change the Atlas

map

Millennium Mob

Zap

My ears hear the truth | My eyes see what people think

I live on top of the sun. There's just me and my twin Zip. I wear black flares and starry shirt. I can see the whole world on my shirt. I have an invisible hat. My trousers turn into anything. I am 10 years old in your world, 100 in mine.

[Change Page](#) | [Visit Settlement](#)

TOUCH DOWN ON VOLCO



enters Volcan atmosphere ... grey cloud drink inc

VOLCO 1999 to 2009
www.volco.org

YOUNG PERSON'S GUIDE 2 EAST LONDON



SEARCH: GO

- HOME
- BOROUGHs
- THEMEs
- SITEs A-Z
- VIDEoS
- THE PROJECT
- CONTACT

YOU ARE HERE... [Home](#) » [The Project](#)

THE YOUNG PERSON'S GUIDE TO EAST LONDON

East London places they don't put in travel guides!

Café Verde @ Riverside > The Mosaic, 45 Narrow Street, Limehouse, London E14 8DN > Fresh food, authentic Italian menu, nice surroundings – a good place to hang out, sit with an ice cream and watch the fountain. For the full review and travel information go to [page 5](#).

Inspired by London 2012

Mediatrix

A BIG THANK YOU TO OUR SPONSORS

ELBA

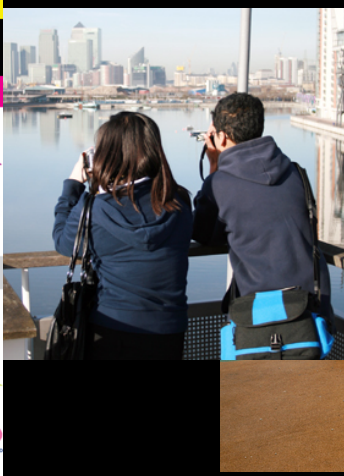
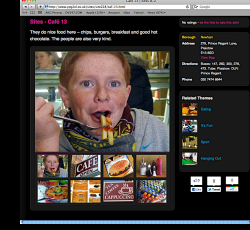
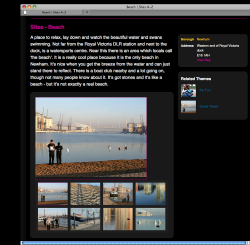
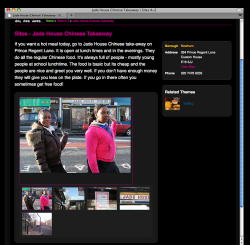
Olympic Lottery

LOTTERY FUNDED

UCL

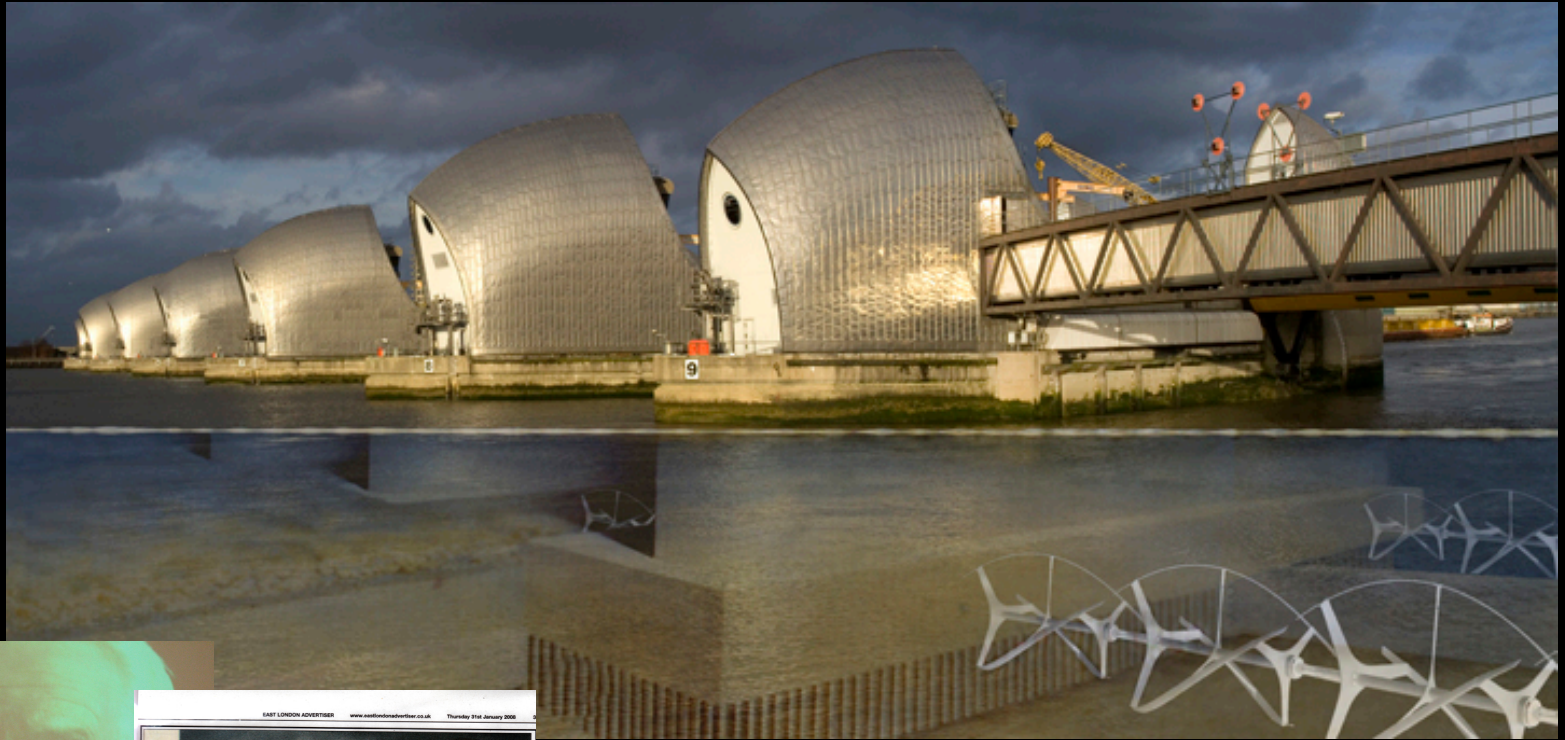
Discover great places to visit in East London reviewed by the teenagers who live there. In this guide you'll find reviews, travel information and photos of over 200 places to visit, all within the five London 2012 Olympic boroughs.

WWW.YPG2EL.



The Young Person's Guide to East London
2007-12

www.ypg2el.org



EAST LONDON ADVERTISER www.eastlondonadvertiser.co.uk Thursday 31st January 2008

BIT OF GEEZER
Tom Dine, 92



GEEZER POWER

Seniors unveil renewable energy plan

people have more experience than the young generation, but they have a lot to offer – and it's time to let the young generation learn from them. GEEZER POWER is a group of elderly people who are passionate about renewable energy. They have set up a group to help the young generation learn from their experience. They have also set up a group to help the young generation learn from their experience. They have also set up a group to help the young generation learn from their experience.

Denise Banks, 76

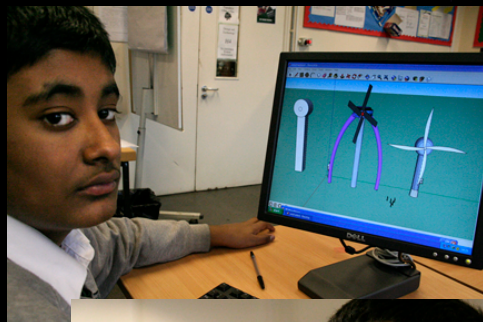
John Dine, 76

GEEZER'S CLUB
LORENS MARY COLLEGE & SPACE STUDIOS

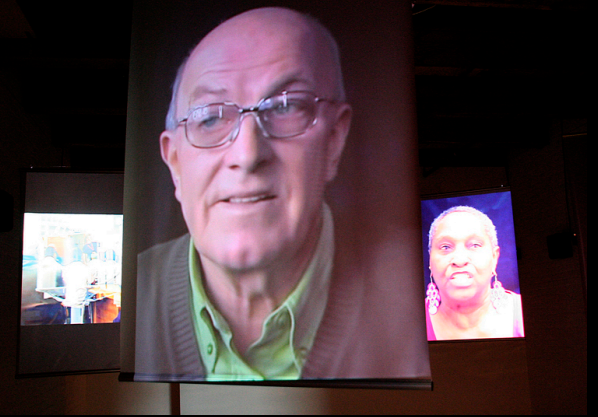
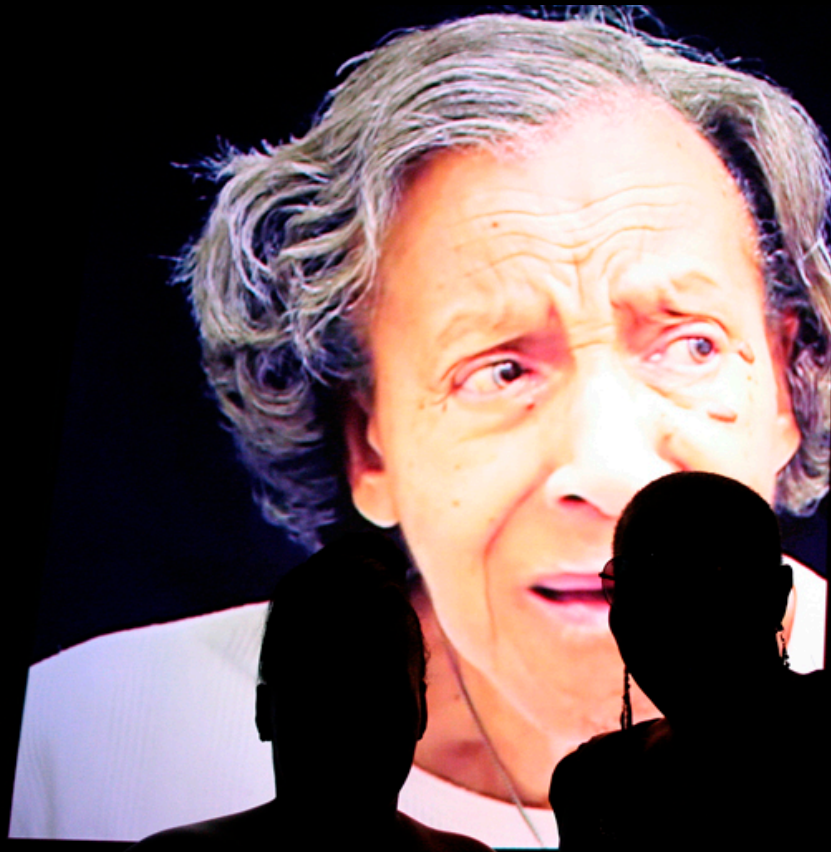
GeezerPower 2007-08

ACTIVE ENERGY

Where art and engineering meet

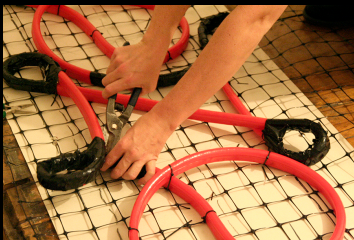
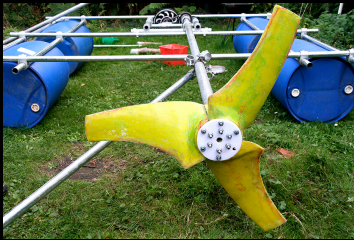
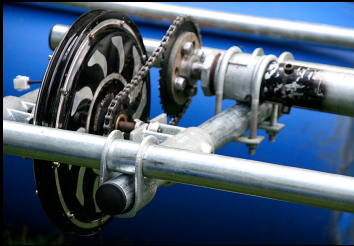
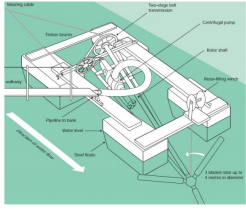


Active Energy
from 2008



Active Energy: Pittsburgh
2012

Active Energy Phase II



Turbine on the Thames

2013

www.active-energy-london.org

arising issues...



an invitation



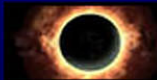
the art of negotiation



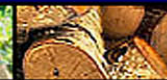
collaboration or participation?



objects, fragments and narratives



map



Millennium Mob

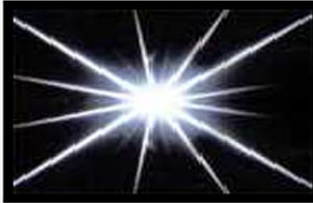
Zap

My ears hear the truth

My eyes see what people think



I live on top of the sun. There's just me and my twin Zip. I wear black flares and starry shirt. I can see the whole world on my shirt. I have an invisible hat. My trousers turn into anything. I am 10 years old in your world, 100 in mine.



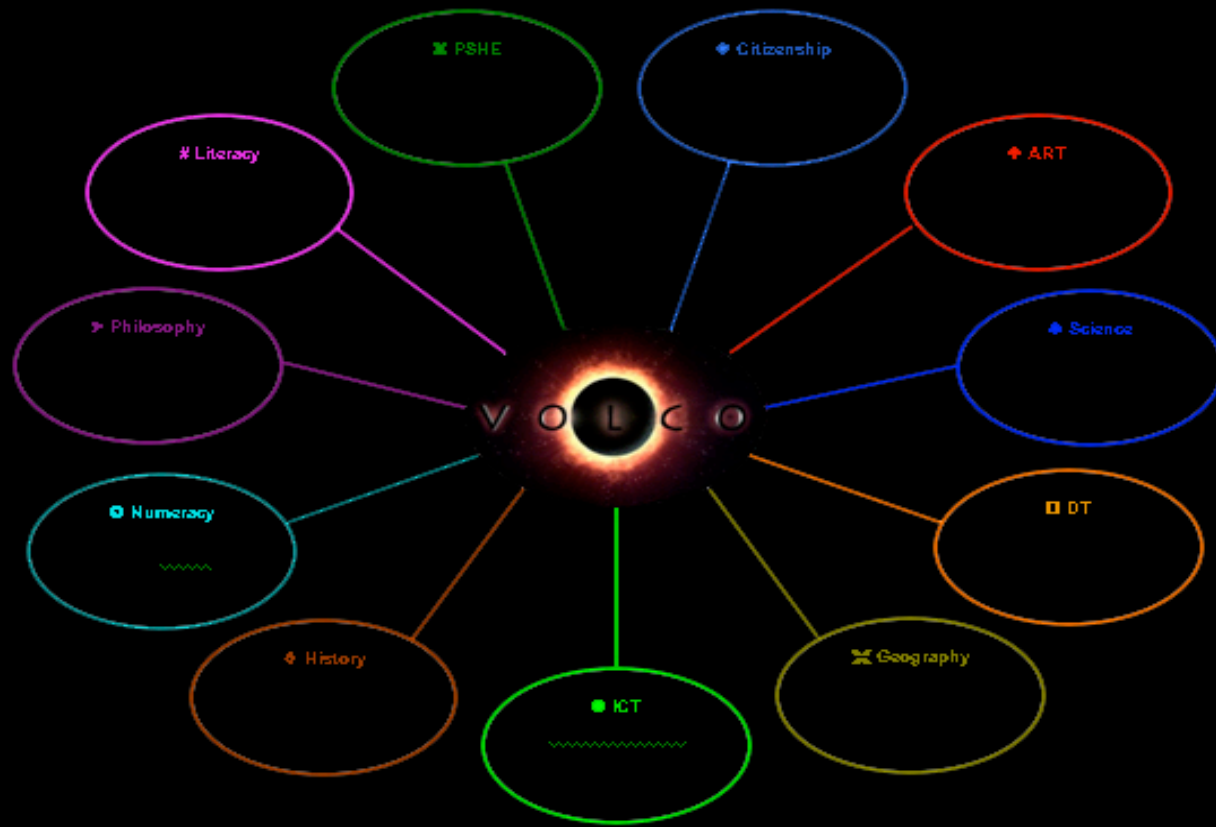
[Change Page](#)

[Visit Settlement](#)

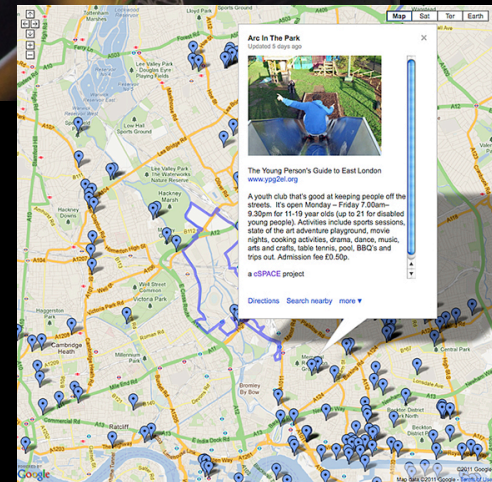
managing collective input



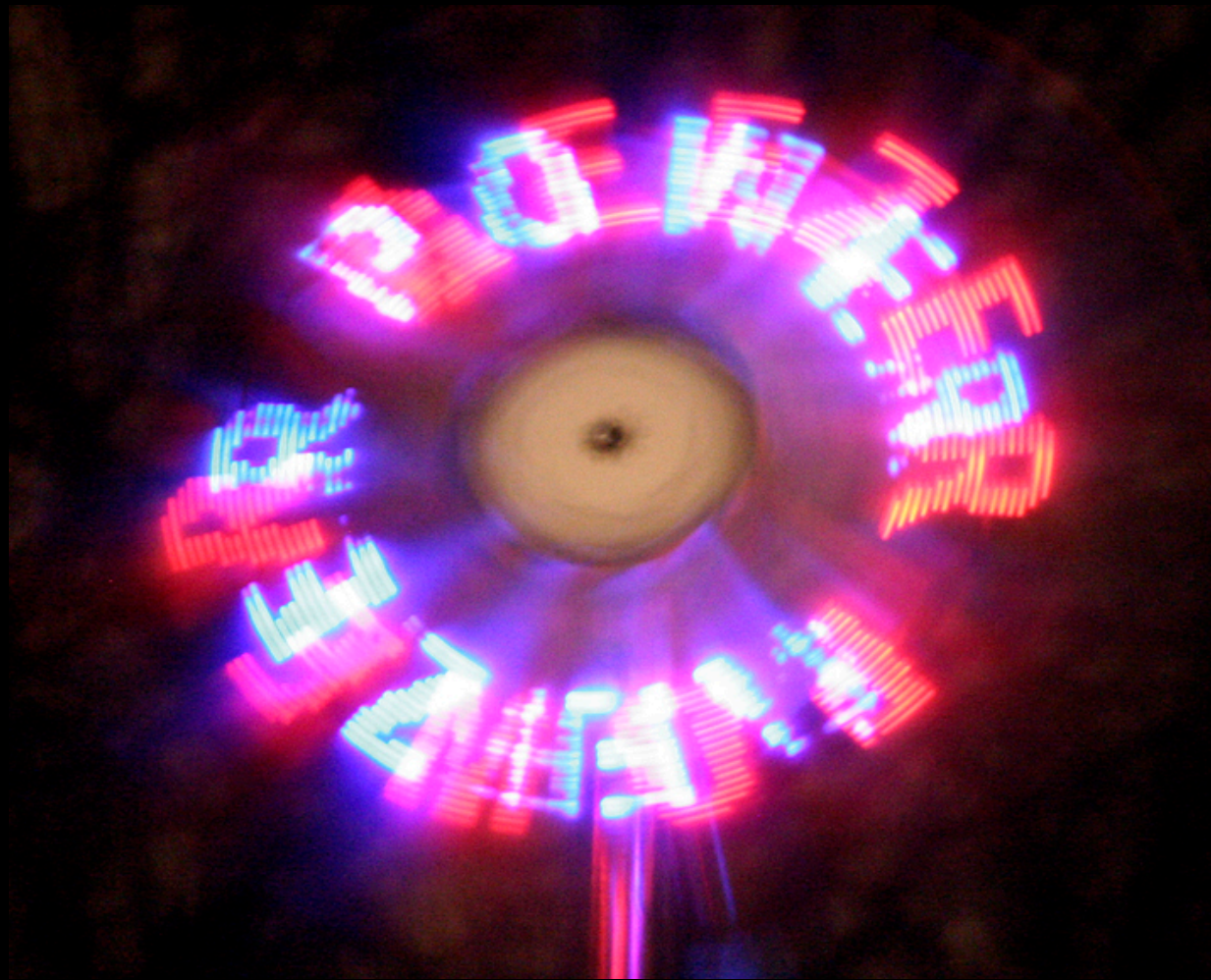
managing multiple partners and participants



educational process meets artistic production



transforming the means of production



a process/product continuum

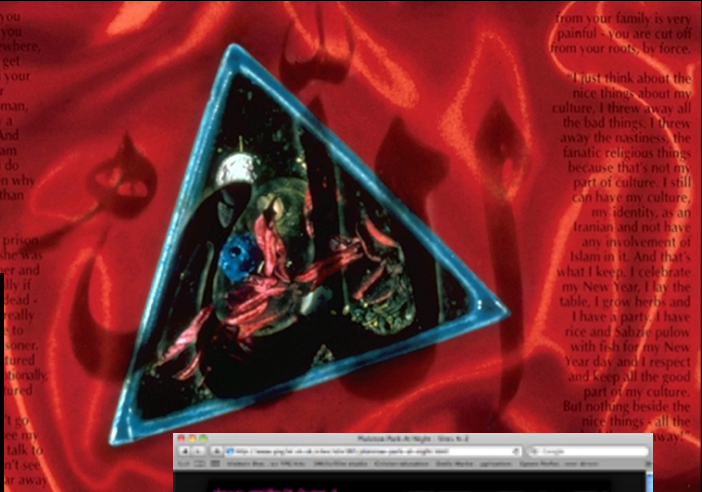


If you are a girl you can't travel and you want to go somewhere, still you have to get permission from your brother or father because as a woman, you're not really a proper person. And you feel "well I am intelligent, I can do this and that then why should I be less than my brother?"

My sister was in prison in Iran because she was a political prisoner and they if head - really - to - singer, fured stomach, tired. I can see my talk to it, I see it away.

from your family is very painful - you are cut off from your roots, by force.

I just think about the nice things about my culture. I throw away all the bad things. I throw away the nastiness, the fanatic religious things because that's not my part of culture. I still can have my culture, my identity, as an Iranian and not have any involvement of Islam in it. And that's what I keep. I celebrate my New Year, I buy the table, I grow herbs and I have a party. I have rice and Sabzeh pulow with fish for my New Year day and I respect and keep all the good part of my culture. But nothing beside the nice things - all the way.



locating the aesthetic



when it goes wrong



feedback and evaluation



funding



individual or organisation?



Mass support is crucial if the campaign is to succeed
The support of established organisations, and activists is necessary but it is ultimately organised mass support which can wield most power

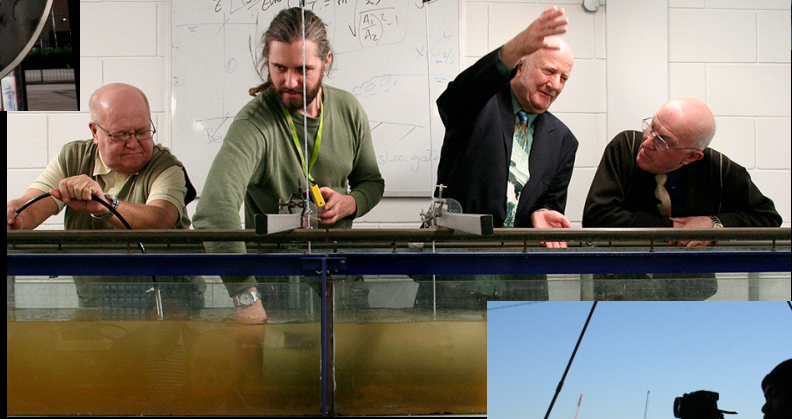
PUBLIC SUPPORT

The support of the local press is very important, but it is essential to get information from the campaign to the press and media. The press and media are valuable in order to bring the wider public into the campaign. It may not be the case that the press will do this for you, but it is essential to get the message across.

Important that evidence of the campaign is at the hospital for visitors & passers by:

28th of November 1771 - the first large public meeting at York Hall attended by nearly 700 people. Speakers from the campaign committee were supported by representatives from various organisations, local and national, and a great portion of the meeting was devoted to speakers from the floor.

28th of January - a street demonstration marched from Bethnal Green to the London Hospital, which hospital is located off the District Management Team. This was followed by a meeting of the Area Health Authority in March in which a decision was made to cancel the hospital. The demonstration was supported by the Hackney Trades Council, Hackney and City Council, and the Hackney Trades Council. The demonstration was supported by the Hackney Trades Council, Hackney and City Council, and the Hackney Trades Council.



a role for art in social change

